

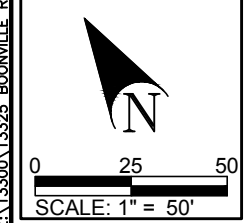
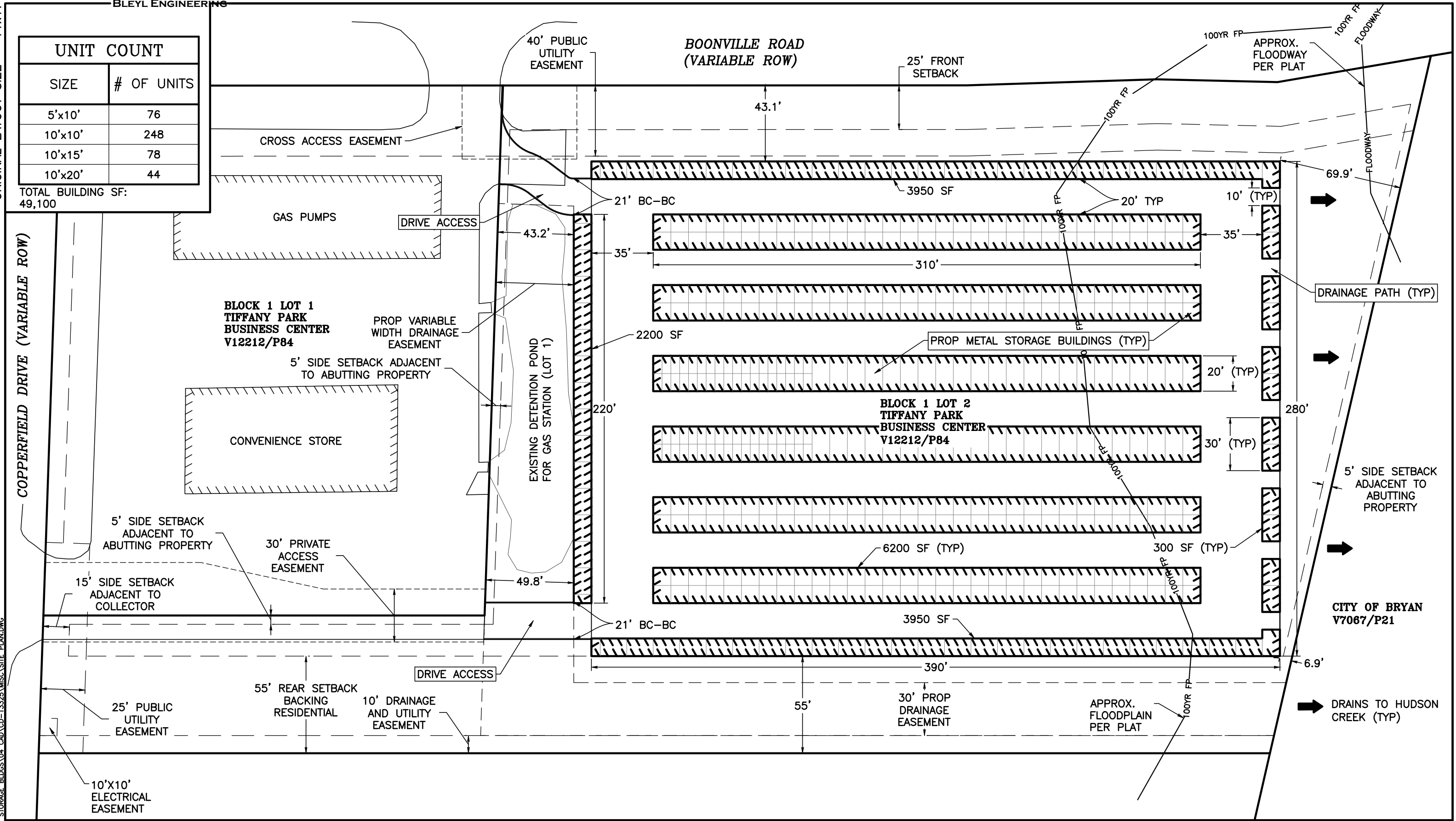
ORIGINAL LAYOUT SIZE - 11x17
Z:\13300\13325 BOONVILLE RD STORAGE BLDGS.04 CAD\CD-13325\MISC\SITE PLAN.DWG

BLEYL ENGINEERING

UNIT COUNT	
SIZE	# OF UNITS
5'x10'	76
10'x10'	248
10'x15'	78
10'x20'	44
TOTAL BUILDING SF: 49,100	

COPPERFIELD DRIVE (VARIABLE ROW)

Z:\13300\13325 BOONVILLE RD STORAGE BLDGS.04 CAD\CD-13325\MISC\SITE PLAN.DWG



PROJECT NAME:	BOONVILLE STORAGE
PROJECT NUMBER:	13325
PREPARED FOR:	Blackwood Investment Prop.
DATE:	11-28-23

BOONVILLE STORAGE SITE PLAN

BLEYL ENGINEERING
TEXAS FIRM REGISTRATION NO. F-678

1722 BROADMOOR, SUITE 210, BRYAN TEXAS 77802
PHONE 979-268-1125 FAX 979-260-3849
WWW.BLEYLENGINEERING.COM